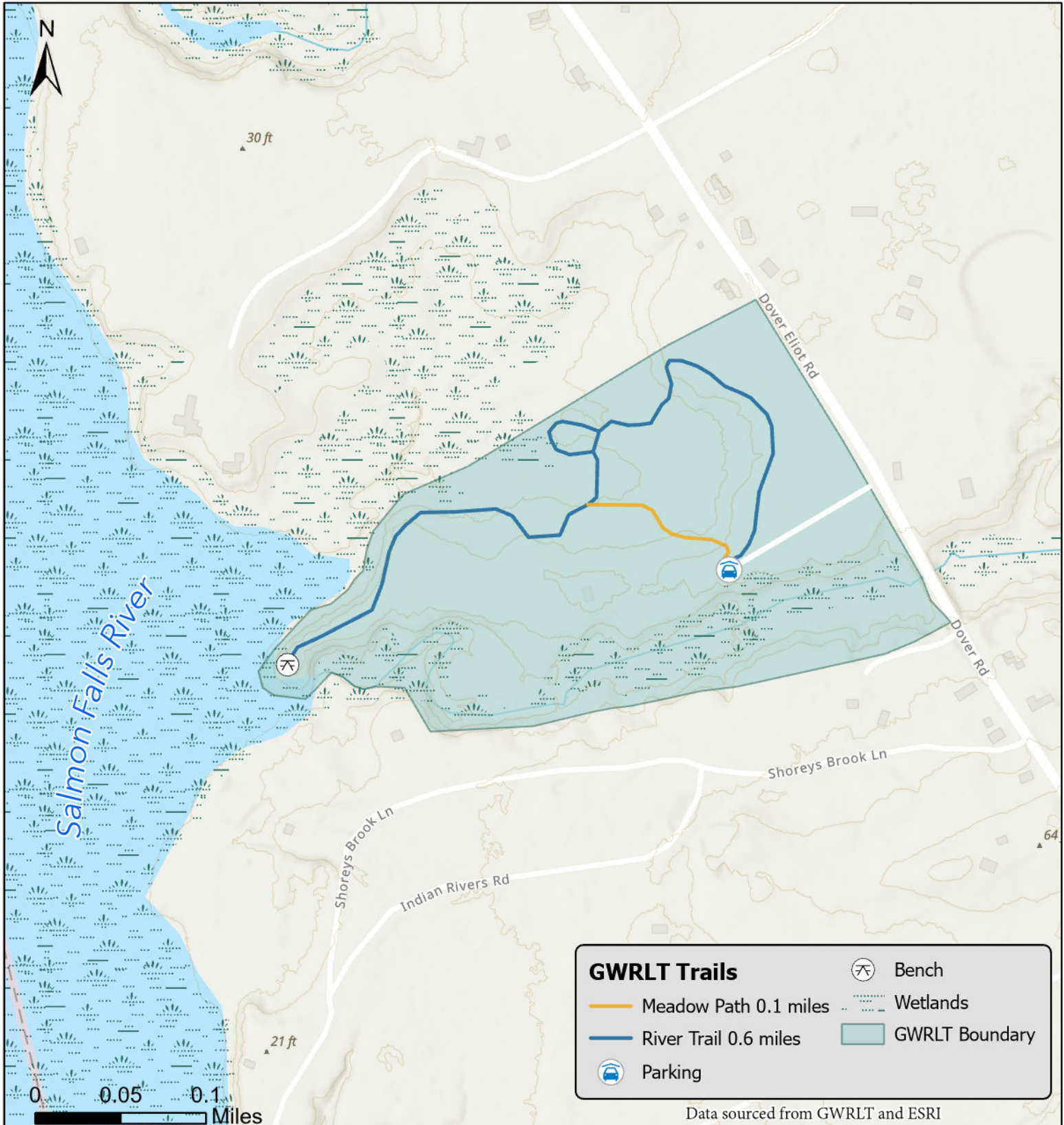




# GREAT WORKS REGIONAL LAND TRUST

# Savage Wildlife Preserve

15 Dover Eliot Rd, South Berwick  
GPS Coordinates Lat: 43.182 Lat: -70.814



Savage Wildlife Preserve is a 26 acre parcel with a 0.6 mile trail network that intertwines between diverse meadow and forest habitats. The trail comes to a viewshed of the Salmon Falls River and its estuarine wetlands. Keep your eyes and ears peeled for the numerous bird species that inhabit this ecologically important preserve. Terrain: flat. EASY