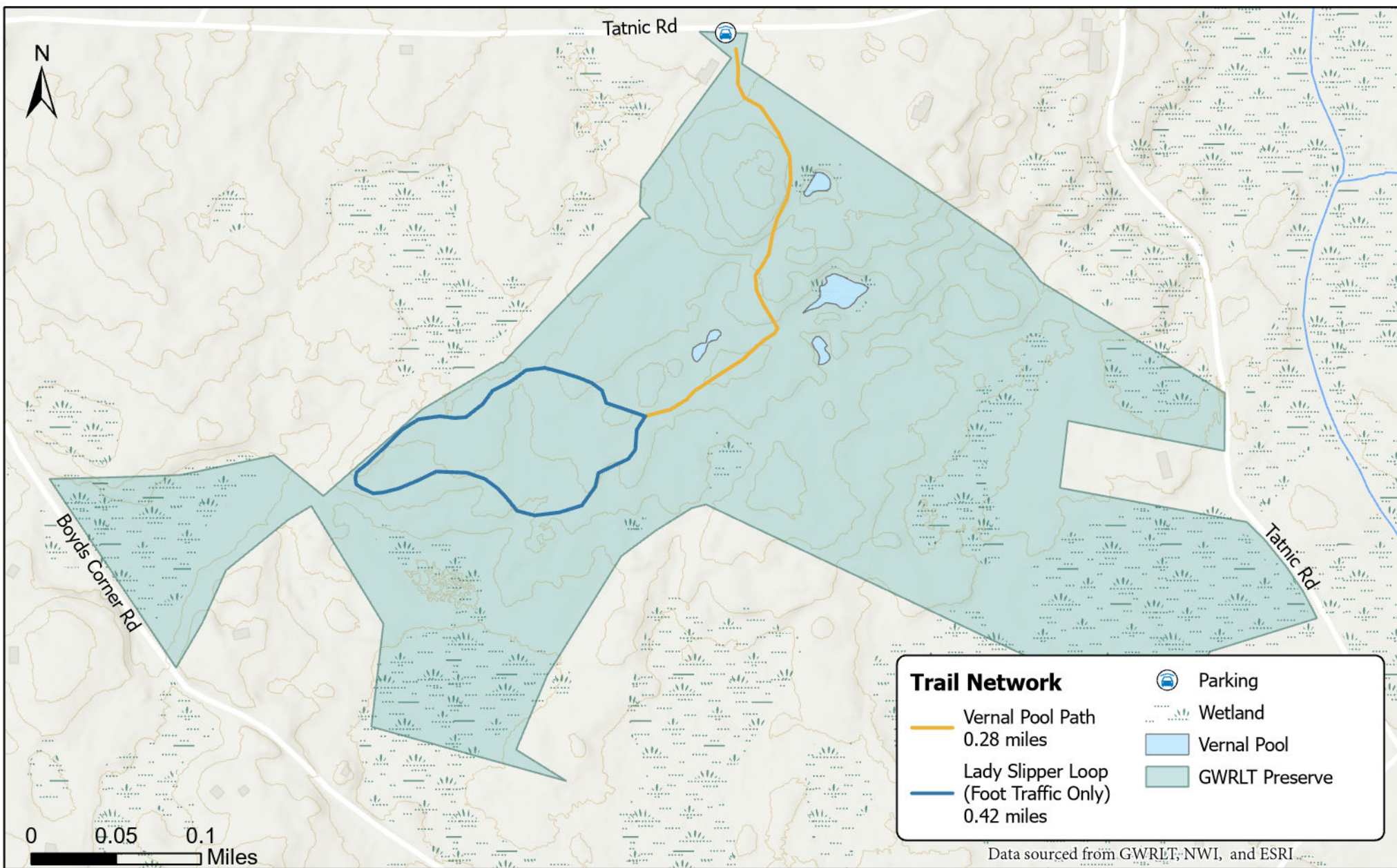




Tatnic Woods Preserve

2460 Tatnic Rd, Wells | GPS Coordinates Lat: 43.283 Long: -70.691



Tatnic Woods is a 26 acre preserve that protects the biologically diverse vernal pools dotted throughout the forest. These sensitive pools burst with life from salamanders to wood frogs in the spring and are aptly named Nature's Nurseries for a reason as they support critical biological function. There is a 0.7 mile trail that intertwines through these pools so please be respectful and do not disturb them. Terrain: hilly. EASY to MODERATE