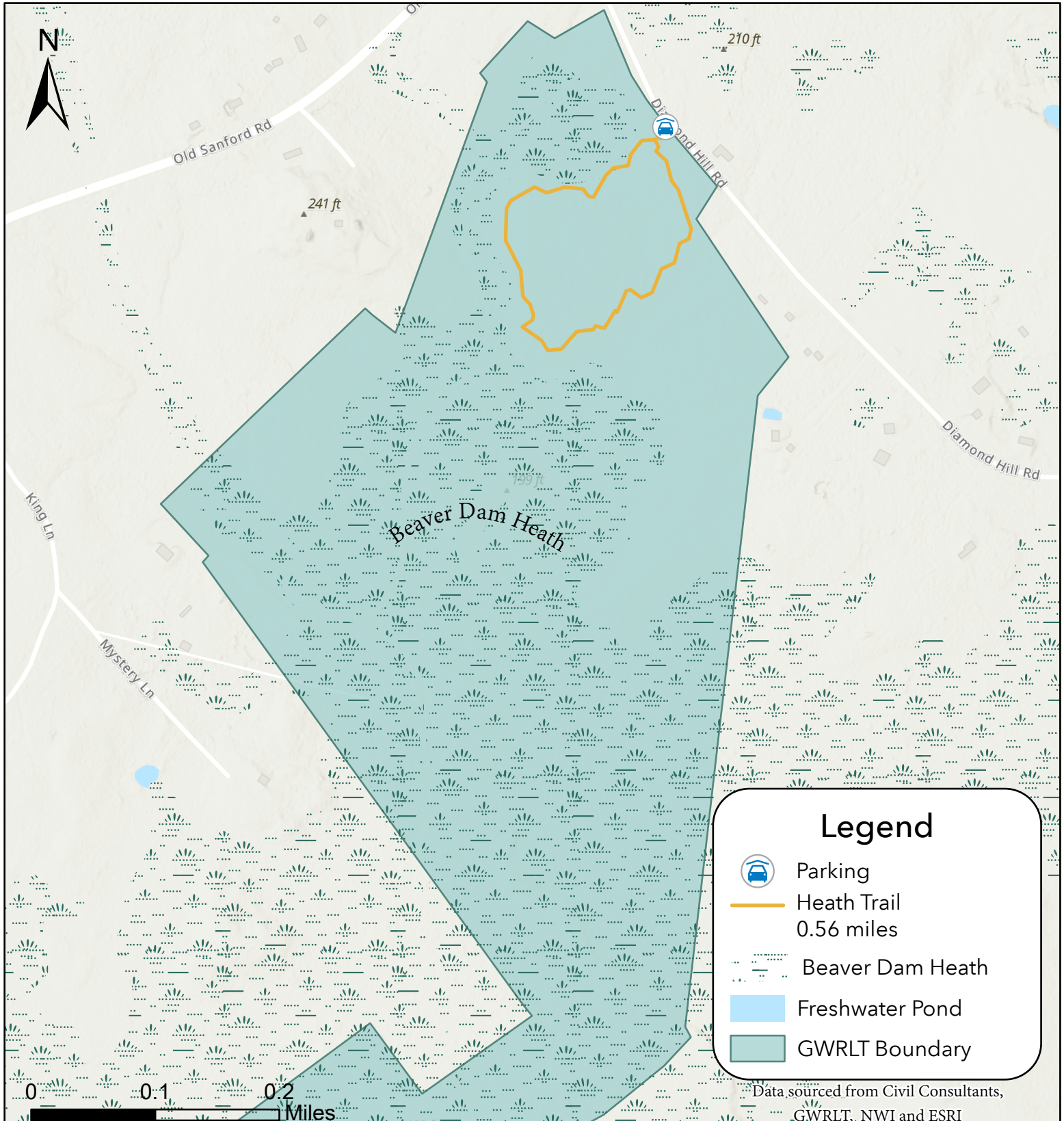




GREAT WORKS
REGIONAL LAND TRUST

Grants Meadow Preserve

Diamond Hill Rd, Berwick | GPS Coordinates Lat: 43.308 Long: -70.797



Grants Meadow is a 181 acre preserve with a 0.5 mile loop trail that runs along the edge of Beaver Dam Heath. The Heath is only accessible in the winter months and is home to a glacial esker and a stand of rare White Atlantic Cedar. Hawk sightings and coyote tracks are often seen on the Heath. Terrain: flat. EASY