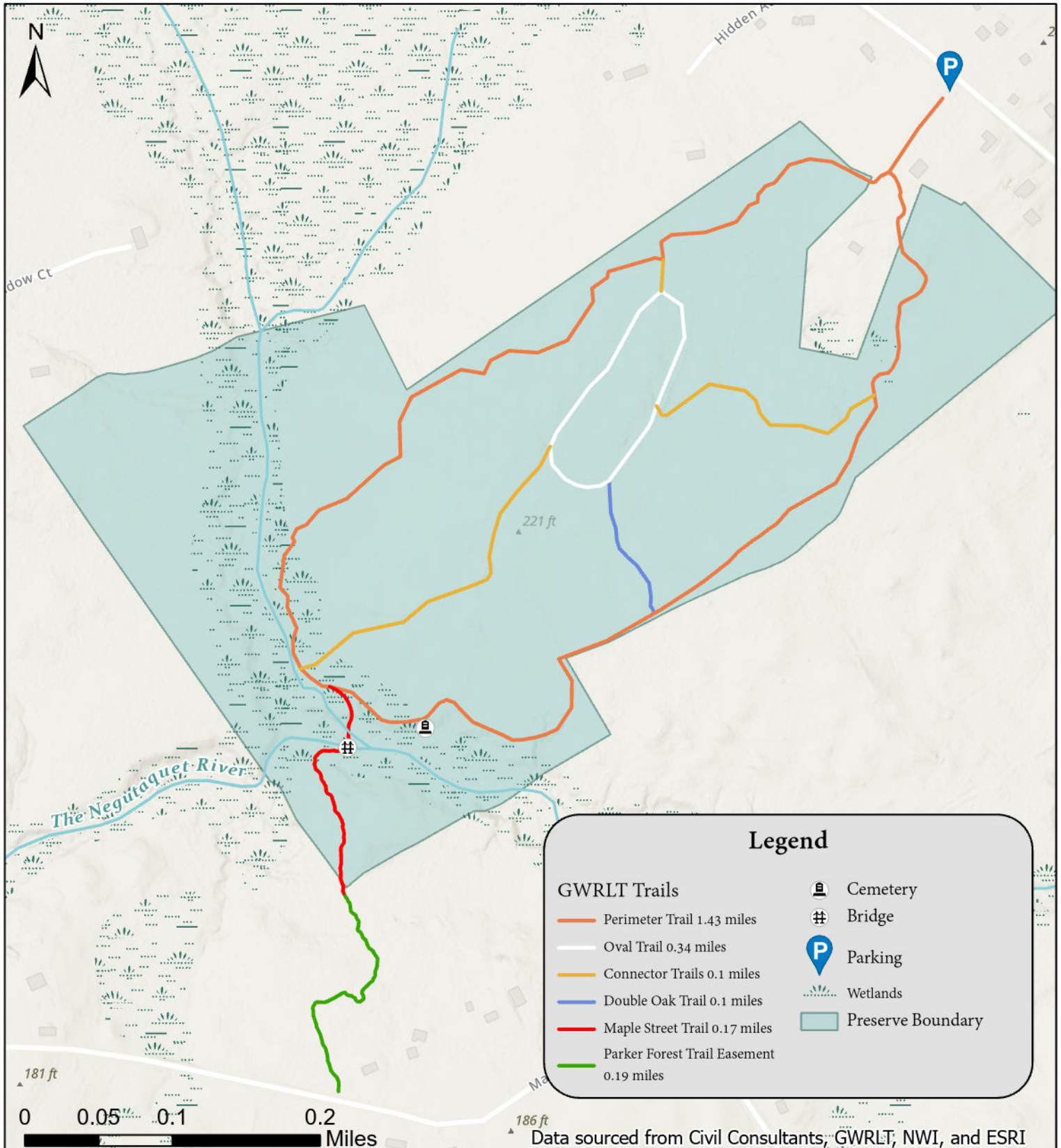




GREAT WORKS REGIONAL LAND TRUST

Negutaquet Conservation Area

219 Lebanon Rd, North Berwick | GPS Coordinates Lat: 43.319 Long: -70.753



Negutaquet Conservation Area is a 102 acre preserve with 2.7 miles of wooded trails through a primarily northern hardwood forest. This diverse trail passes by meadows, stone walls, an old cemetery, and crosses the Negutaquet River over a newly constructed bridge built by GWRLT volunteers. The Maple Street Trail connects to North Berwick town land through a private easement. Terrain: flat. MODERATE