

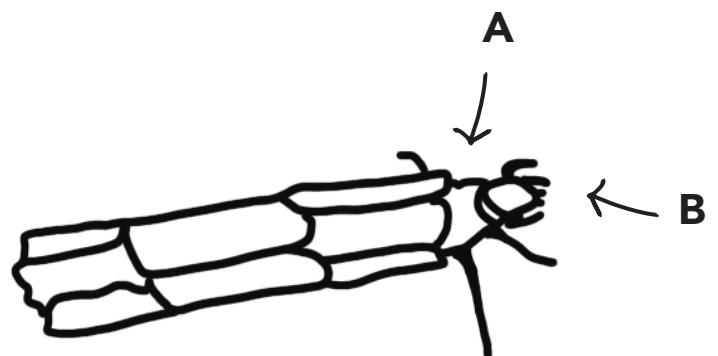
Vernal Pool Species Observations

Caddisfly Larvae: Northern & Giant Casemaker

Caddisflies are soft-bodied, aquatic larvae that, depending on their species and habitat, use plant materials or teeny stones to construct portable cases that may be "log-cabin," tube, or snail shell-shaped. Identify which caddisfly is Northern Casemaker vs. Giant Casemaker. Identify the thorax and head of the caddisflies. Answers on the back.



1. _____



2. _____

Answers:

1. *Limnephilidae*, Northern Casemaker. A. Thorax, B. Head
2. *Phryganidae*, Giant Casemaker. A. Thorax, B. Head



GREAT WORKS
REGIONAL LAND TRUST